

Datasheet: OptiFiber® Pro OTDR

OptiFiber Pro OTDR

Versiv™ Cabling

Certification

copper

certification

OLTS

LinkWare™

management software



Designed for Enterprise Fiber

OTDR technology

OptiFiber Pro

Unique features:

-
-
-

Performance:

-
-
-
-
-
-
-

Standards:

-
-

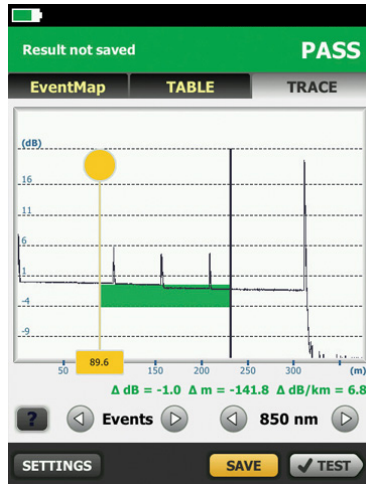
Unique Certification with Flexibility and Efficiency

fiber testing

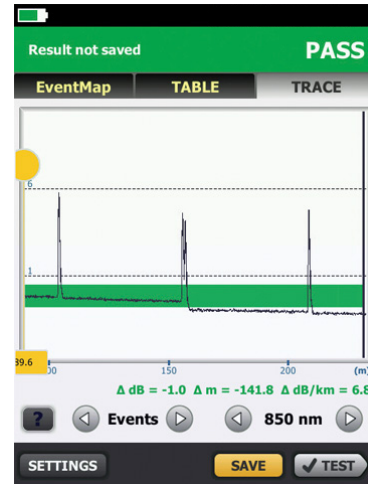
Advantages:

-
-
-
-
-





View traces



Pinch and zoom in for trace detail

Optimized for the Datacenter

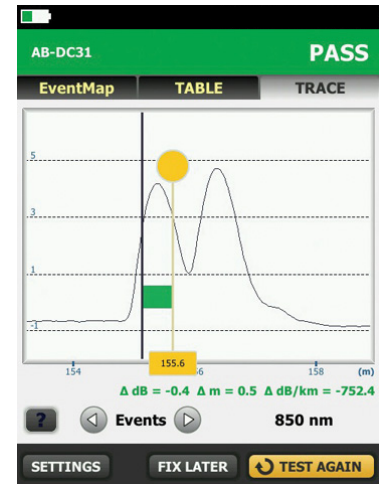
Advantages:

-
-
-

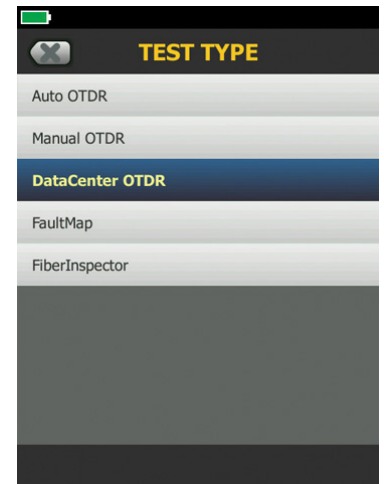
Extremely short event and attenuation dead zone

Two second trace per wavelength

DataCenter OTDR™ Mode

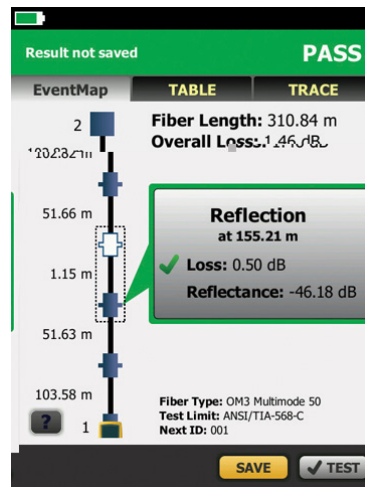


Extremely short event and attenuation dead zone

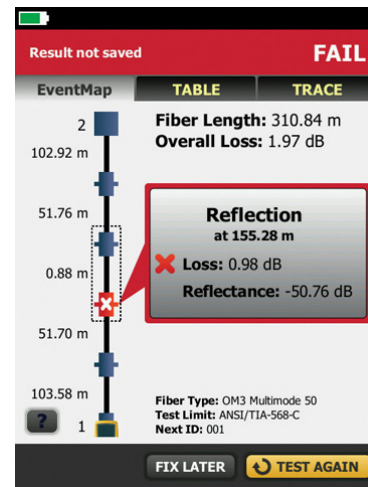


DataCenter OTDR Mode

Graphical EventMap™ view

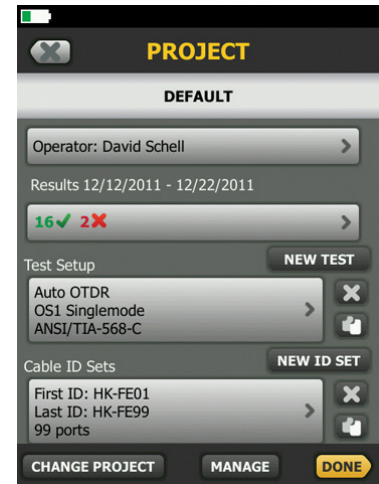


Graphical EventMap™ view – PASS

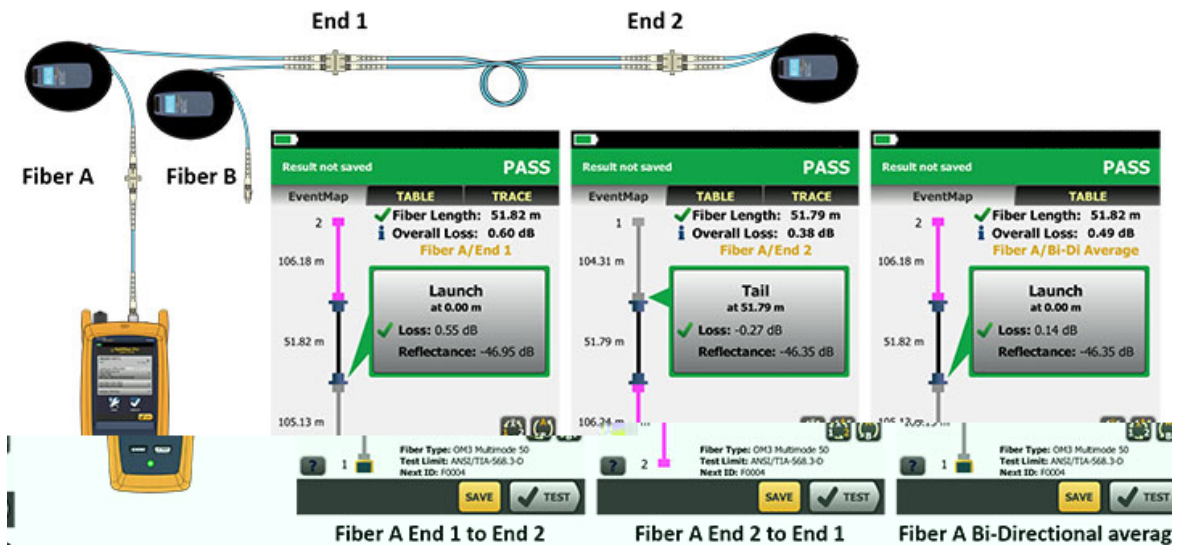


Eventmap™ – FAIL. See Help icon for on screen corrective action.

Dynamic project and user profile management with ProjX management system

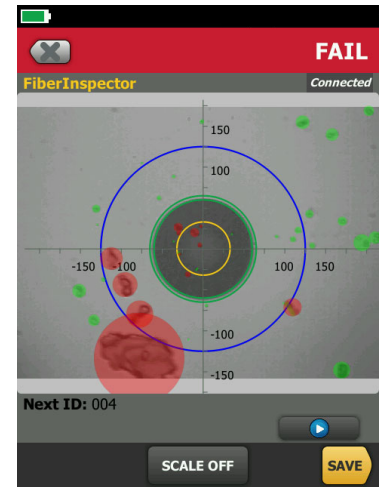


ProjX: Dynamic project and user profile management



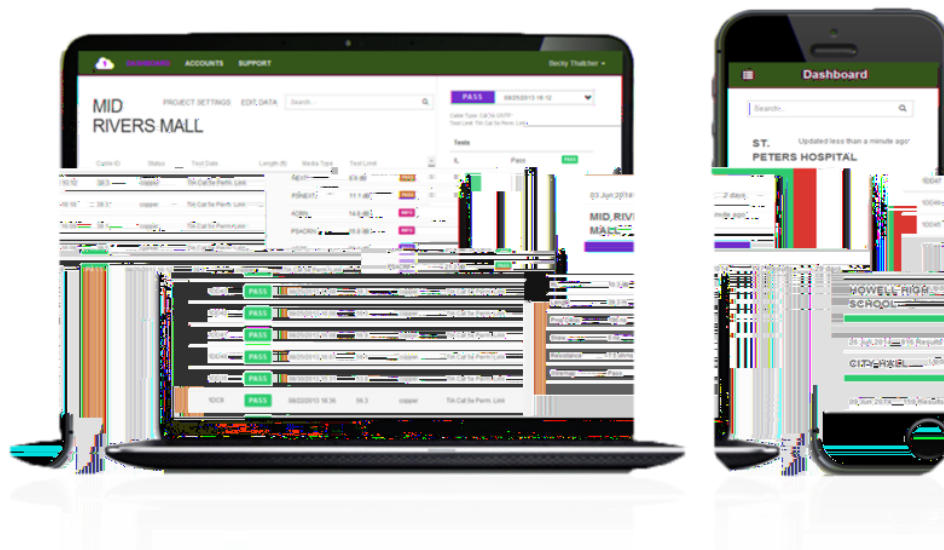
OptiFiber Pro's SmartLoop technology test two fiber in one tests while providing individual pass, fail and bi-directionally averaged results for each fiber link.

Fiber Endface Inspection and Certification



FiberInspector probe

LinkWare Live



LinkWare™ Management Software

LinkWare Report

The screenshot shows the LinkWare Management Software interface. The main window displays a table of test results with columns: Cable ID, Date / Time, Status, Length, Pinouts, Info, and Test Log. Below the table, there is a 'Properties' section showing details for a selected test, including Cable Type, Length, and Pinouts.

Cable ID	Date / Time	Status	Length	Pinouts	Info	Test Log
1	01/01/2002 01:00	Pass	100	1-2, 3-6, 4-5, 7-8	100m Cat 5 Channel	
2	01/01/2002 01:00	Pass	100	1-2, 3-6, 4-5, 7-8	100m Cat 5 Channel	
3	01/01/2002 01:00	Pass	100	1-2, 3-6, 4-5, 7-8	100m Cat 5 Channel	
4	01/01/2002 01:00	Pass	100	1-2, 3-6, 4-5, 7-8	100m Cat 5 Channel	
5	01/01/2002 01:00	Pass	100	1-2, 3-6, 4-5, 7-8	100m Cat 5 Channel	
6	01/01/2002 01:00	Pass	100	1-2, 3-6, 4-5, 7-8	100m Cat 5 Channel	
7	01/01/2002 01:00	Pass	100	1-2, 3-6, 4-5, 7-8	100m Cat 5 Channel	
8	01/01/2002 01:00	Pass	100	1-2, 3-6, 4-5, 7-8	100m Cat 5 Channel	
9	01/01/2002 01:00	Pass	100	1-2, 3-6, 4-5, 7-8	100m Cat 5 Channel	
10	01/01/2002 01:00	Pass	100	1-2, 3-6, 4-5, 7-8	100m Cat 5 Channel	

Properties

Cable Type: UTP 100 Ohm Cat 5e

Length: 100.00m

Pinouts: 1-2, 3-6, 4-5, 7-8

Info: 100m Cat 5 Channel

Test Log: 100m Cat 5 Channel



Key OTDR Specifications

[illegible]

Mutimode module		Singlemode module		Quad module	

Additional Key Specifications

FiberInspector probe specifications	

VFL specifications	
www.flukenetworks.com/orderopro	

Technical Specifications

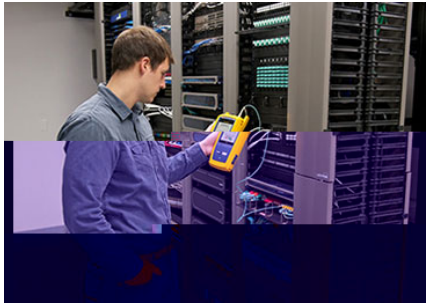
General specifications	

Charge Time	

Environmental specifications	

OptiFiber Pro Ordering Information

OptiFiber Pro Wireless models	
OptiFiber Pro Non-wireless models	

[illegible]

Accessories	Description
	(Available in the following countries.)

FiberInspector probe models and accessories

Model	Description

OptiFiber Pro Gold Support models

Model	Description

www.flukenetworks.com/OPRO