

WAC510



WAC505

Introducing one-touch wireless visibility & management

Wireless network discovery, setup, monitoring and management can now be done from anywhere and any screen with NETGEAR Insight app or Cloud Portal.

Reliable wireless connectivity for employees and customers is a requirement for any business today. All devices are now connected, all users are mobile and "WiFi everywhere" is commonplace. Business owners are often too busy to handle this and need WiFi that just works!

NETGEAR introduces the new IT revolution for small businesses with remote visibility and control with NETGEAR Insight management solution. Experience easy set-up, remote management and full control of your wireless network. With 20 years of experience in small & medium business networking, NETGEAR is now delivering wireless connectivity that "just works" at your fingertips.

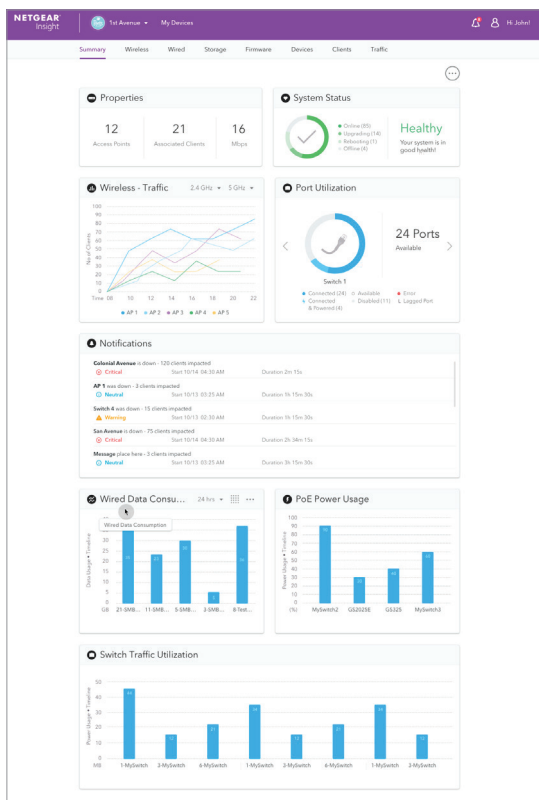
NETGEAR Insight also enables multi-device configuration of your NETGEAR Insight Managed wireless access points, either locally or remotely.

It provides network management, monitoring and service deployment across multiple remote and local sites for the easiest and most user-friendly wireless networking experience. Anywhere management also includes Insight Managed switches and Business-Class ReadyNAS on top of Insight Managed Wireless Access points, enabling whole network visibility and management.

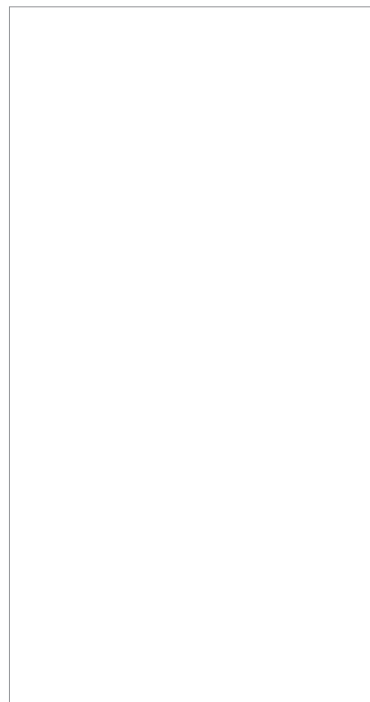
Insight app also allows you discover select wired and wireless devices from your local or remote network.

Business Features for higher speed, greater coverage and higher density WiFi

- Business class WiFi with superior Wave 2 802.11ac performance and range
- 2x2 with 2 streams of data (2.4Ghz and 5Ghz) for an aggregate throughput of up to 1.3Gbps
- Multi-User Multiple In Multiple Out (MU-MIMO) avoids congestion and ensures performance in high client density deployments like public WiFi hotspots
- One PoE port (WAN port) on both models for ease of deployment.
- One-touch network visibility. Anywhere. Remote management and monitoring from NETGEAR Insight app or Cloud Portal for unrivaled management experience of your wireless network.
- App managed. Faster installation through NETGEAR Insight app or Cloud Portal. No additional hardware needed.
- Market leading 5-year warranty with 24x7 chat support for peace of mind



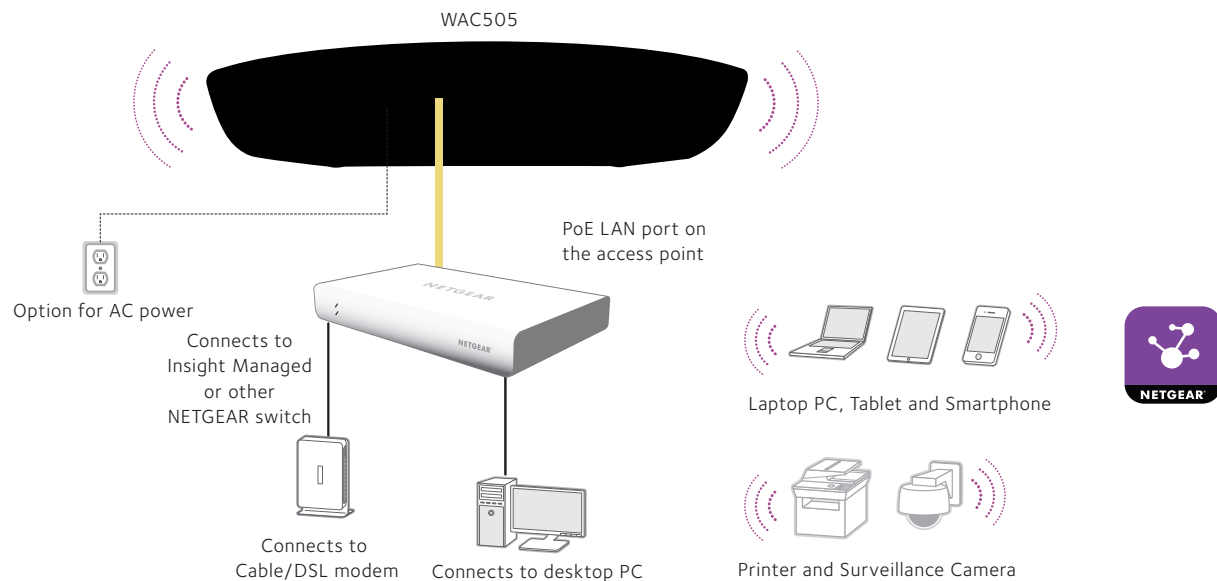
Cloud Portal dashboard



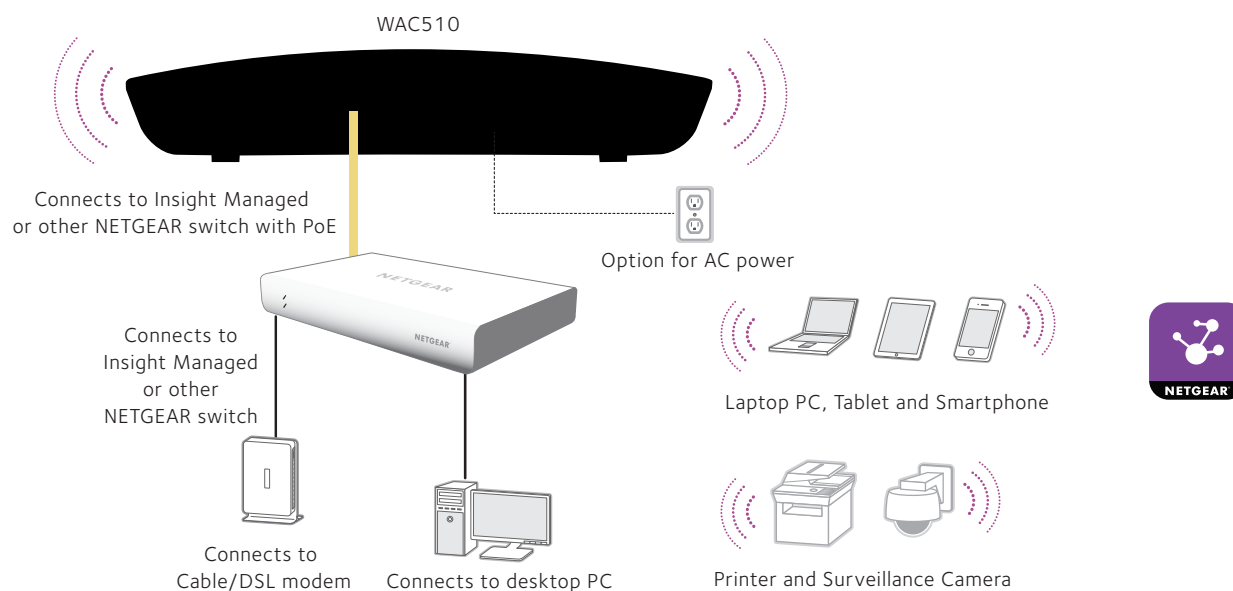
Wireless Usage

Example Application

WAC505 Deployment Scenario



WAC510 Deployment Scenario



Product Comparison	WAC505	WAC510	WAC720	WAC730	WAC740
Frequency	2.4GHz and 5GHz	2.4GHz and 5GHz	2.4GHz and 5GHz	2.4GHz and 5GHz	2.4GHz and 5GHz
Wireless Mode (Transmit x Receive)	802.11ac (2x2)	802.11ac (2x2)	802.11ac (2x2)	802.11ac (3x3)	802.11ac (4x4)
802.11ac Wave	Wave 2	Wave 2	Wave 1	Wave 1	Wave 2
Multi-User MIMO	Yes	Yes	No	No	Yes
Maximum Theoretical Throughput	1.2Gbps AC1200	1.3Gbps AC1300	1.2Gbps AC1200	1.7Gbps AC1700	2.3Gbps AC2300
Maximum Throughput (2.4/5GHz)	300/867Mbps (2.4/5GHz)	400/867Mbps (2.4/5GHz)	300/867Mbps (2.4/5GHz)	450/1300Mbps (2.4/5GHz)	600/1700Mbps (2.4/5GHz)
Power over Ethernet (PoE) IEEE 802.3af	Yes	Yes	Yes	Yes	Yes, PoE+
PoE Power Consumption	8.9 Watts	9.3 Watts	11.0 Watts	12.9 Watts	17.9 Watts
Centralized Management	Insight App, Standalone	Insight App, Standalone	Quad Mode Management (Standalone, Ensemble™, Controller, and Business Central)	Quad Mode Management (Standalone, Ensemble™, Controller, and Business Central)	Controller
SNMP	v1, v2c	v1, v2c	v1, v2c	v1, v2c	v1, v2c
Secure SSH	Yes	Yes	Yes	Yes	Yes
Secure Socket Layer (SSL)	Yes	Yes	Yes	Yes	Yes
Router Mode	No	Yes	No	No	No
Wireless Distribution System (WDS)					
Repeater	Yes	Yes	Yes	Yes	No
Bridge point-to-point/multi-point	Yes	Yes	Yes	Yes	No
Simultaneous bridge & wireless client association	Yes	Yes	Yes	Yes	No
Antenna	Internal 3/4dBi (2.4/5GHz)	Internal 3/4dBi (2.4/5GHz)	Internal 5/6dBi (2.4/5GHz) Three (3) External reverse SMA connectors for 2.4/5GHz antennas	Internal 5/6dBi (2.4/5GHz) Two (2) External reverse SMA connectors for 2.4/5GHz antennas	Internal 5/6dBi (2.4/5GHz) four (4) External reverse SMA connectors for 2.4/5GHz antennas
Security					
WiFi Protected Access (WPA/WPA2), 802.11i	Yes	Yes	Yes	Yes	Yes
MAC address filtering with access control	Yes	Yes	Yes	Yes	Yes
802.1x RADIUS support with EAP TLS, TTLS, PEAP	Yes	Yes	Yes	Yes	Yes
Rogue AP detection	Yes	Yes	Yes	Yes	Yes
Block SSID Broadcast	Yes	Yes	Yes	Yes	Yes
VLAN Support	Yes	Yes	Yes	Yes	Yes
Guest Network/Captive Portal	Yes	Yes	Yes	Yes	Yes
Accepts external antennas	No	No	Yes	Yes	Yes
Easy ceiling mounting/wall mouting	Yes	Yes	Yes	Yes	Yes
Bandwidth management	Yes	Yes	Yes	Yes	Yes
Bonjour Gateway	No	No	Yes	Yes	Yes
Link Layer Discovery Protocol	Yes	Yes	Yes	Yes	Yes
Bandsteering	Yes	Yes	Yes	Yes	Yes

Technical Specifications

Standards		WAC505	WAC510
IEEE 802.11ac Wave 2 standard		Yes	Yes
WMM Wireless Multimedia Prioritization		Yes	Yes
WDS Wireless Distribution System		Yes	Yes
Power over Ethernet (PoE) IEEE 802.3af		Yes	Yes
Power over Ethernet (PoE) IEEE 802.3at		Yes	Yes
Physical Specifications			
Dimensions W x D x H		175 x 165 x 35 mm (6.89 x 6.49 x 1.38 in)	197.32 x 197.32 x 37mm (7.75 x 7.75 x 1.45in)
Weight		256 g (0.56 lb)	555.5g (1.22lb)
Physical Interfaces			
Interface		One 10/100/1000BASE-T Gigabit Ethernet (RJ-45) ports with Auto Uplink™ (Auto MDI-X) supporting IEEE 802.3af or 802.3at Power over Ethernet (PoE)	Two (WAN/LAN) 10/100/1000BASE-T Gigabit Ethernet (RJ-45) ports with Auto Uplink™ (Auto MDI-X) with WAN port supporting IEEE 802.3af or 802.3at Power over Ethernet (PoE)
Power adapter (not included)		12V DC, 2.5A; plug is localized to country of sale	
LED		Five (5) Power, Link/ACT, LAN, 2.4GHz, 5GHz	Six (6) Power, Link/ACT, LAN1, LAN2, 2.4GHz, 5GHz
Security			
WiFi Protected Access® (WPA, WPA2)		Yes	
WPA2 Enterprise		Yes, 802.1x	Yes
Wireless access control to identify authorized wireless network devices			Yes
MAC address authentication			Yes
Network Management			
NETGEAR Insight App		App Management for setup, monitoring and management	
SNMP v1, v2			Yes
Advanced Wireless			
Wireless Distribution System (WDS)		Bridge mode: Point-to-point wireless	
		Bridge mode: Point-to-multipoint wireless	
		Repeater mode	
		Adjustable Transmit Power Control (TPC)	
		Device detection	
		Identify type of wireless clients in the network	

Technical Specifications

Package Contents	WAC505	WAC510
	WAC505 Insight Managed Smart Cloud Wireless Access Point Wall/ceiling mount kit Installation guide	WAC510 Insight Managed Smart Cloud Wireless Access Point Wall/ceiling mount kit Installation guide
Warranty and Support		
Hardware Limited Warranty	5 years	5 years
Next-Business-Day (NBD) Replacement	5 years	5 years
Technical support (online, phone)	90 days free from date of purchase*	90 days free from date of purchase*
ProSUPPORT OnCall 24x7 Service Packs**	PMB0S51 (1 yr)	PMB0S52 (1 yr)
	PMB0S31 (3 yrs)	PMB0S32 (3 yrs)
	PMB0S11 (5 yrs)	PMB0S12 (5 yrs)
Ordering Information		
WAC505-10000S	Everywhere except US and Canada	
WAC505-100NAS	US and Canada	
WAC505PA-100NAS	WAC505 with power adapter for US and Canada	
WAC505B03-10000S	3 pack of WAC505 for everywhere except US and Canada	
WAC505B03-100NAS	3 pack of WAC505 for US and Canada	
WAC505B05-10000S	5 pack of WAC505 for everywhere except US and Canada	
WAC505B05-100NAS	5 pack of WAC505 for US and Canada	
WAC510-10000S	Everywhere except US and Canada	
WAC510-100NAS	US and Canada	
WAC510PA-100NAS	WAC510 with power adapter for US and Canada	
WAC510B03-10000S	3 pack of WAC510 for everywhere except US and Canada	
WAC510B03-100NAS	3 pack of WAC510 for US and Canada	
Power Adapters		
PAV12V-100NAS	US and Canada	
PAV12V-100UKS	UK	
PAV12V-100EUS	Europe except UK	
PAV12V-100PRS	China	
PAV12V-100AUS	Australia and New Zealand	

*This product comes with a limited warranty that is valid only if purchased from a NETGEAR authorized reseller, and covers unmodified hardware, fans and internal power supplies – not software or external power supplies, and requires product registration using the Insight mobile app or Insight Cloud portal within 90 days of purchase; see <https://www.netgear.com/about/warranty> for details. Intended for indoor use only.

**The NETGEAR OnCall 24x7 contract provides unlimited phone, chat and email technical support for your networking product.

NETGEAR and the NETGEAR logo are trademarks and/or registered trademarks of NETGEAR, Inc. and/or its subsidiaries in the United States and/or other countries. Other brand names mentioned herein are for identification purposes only and may be trademarks of their respective holder(s). Information is subject to change without notice.
© 2020 NETGEAR, Inc. All rights reserved.