

Features



Speed

- **Blazing Fast Wireless Speed** – Combined wireless speeds of up to 1.6Gbps on the simultaneous 2.4GHz and 5GHz bands
- **Superfast Broadband Speed** – Supports speeds of up to 100Mbps over VDSL2 lines with G.Vector technology
- **Gigabit Wired Speed** – Full gigabit ports ensure ultrafast data transfer speeds
- **Support 802.11 ac** – Data rates up to three times faster than single stream 802.11n



Wi-Fi Range

- **Superior Range & Reliable Wi-Fi** – Three detachable antennas provide stable wireless connections and optimal coverage
- **Beamforming Technology** – Concentrates signal strength in the direction of your devices, delivering stable and highly efficient connections, even over long distances



Uses

- **DSL Port** – For VDSL2/ADSL2+/ADSL2/ADSL connections
- **Ethernet WAN Port** – Supports cable/fiber modem connections via Ethernet cable
- **USB Ports** – Support 3G/4G USB dongle connections
- **Hassle-free Management with Tether App** – Tether App allows easy network management at your fingertips
- **Fast Encryption** – WPS button provides easy, one-touch wireless encryption

Features



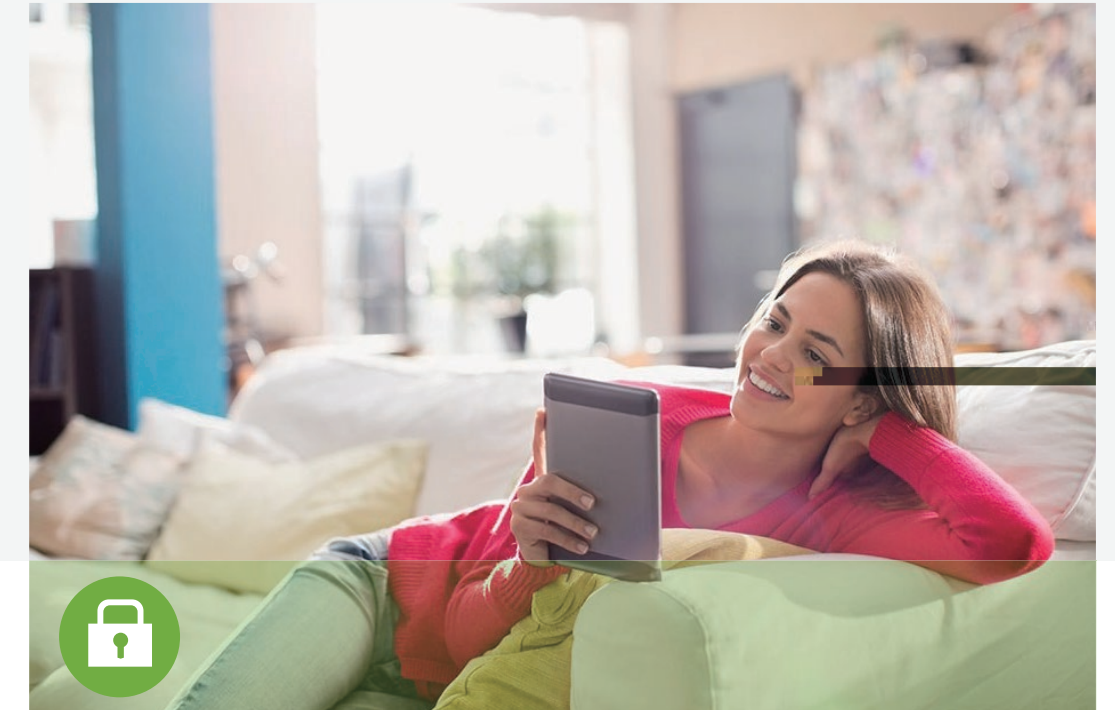
Reliability

- **Simultaneous Dual Band** – Two dedicated networks reduce wireless signal interference to produce more stable connections
- **Versatile Connectivity** – EWAN port and 3G/4G USB ports support your preferred connection type
- **Easy Bandwidth Management** – Bandwidth Control makes it easy to manage the bandwidth allocation for each connected device



Easy Sharing

- **Two USB Ports for Fast Sharing** – Easily access and share printers and files on the network. The router's FTP server function also allows you to remotely access to your files and media on networked devices
- **Built-in Print Server** – Supports wireless printing from multiple computers when used with a USB printer
- **Built-in Media Server** – Allows users to access music, videos, and photos



Security

- **Guest Network Access** – Provides secure Wi-Fi access for guest users
- **Parental Control** – Establishes restricted access policies for connected devices
- **VPN Support** – Secure access to your home or office network from remote locations
- **SPI and NAT Firewall** – Protects end-user devices from potential online attacks

Specifications

Software

- **Operation Modes:** VDSL/ADSL Modem Router, Wireless Router, 3G/4G Router
- **DHCP:** Server, Client, DHCP Client List, Address Reservation, DHCP Relay
- **Quality of Service:** ATM QoS, Bandwidth Control
- **Port Forwarding:** Virtual Server, Port Triggering, DMZ, ALG, UPnP
- **Dynamic DNS:** DynDns, NO-IP
- **VPN Passthrough:** PPTP, L2TP, IPSec Passthrough
- **ATM/PPP Protocols:** ATM Forum UNI3.1/4.0, PPP over ATM (RFC 2364), PPP over Ethernet (RFC2516), IPoA (RFC1577/2225), MER\IPoE (RFC 1483 Routed), Bridge (RFC1483 Bridge), PVC – Up to 8 PVCs
- **Security:** NAT Firewall, Access Control, IP and MAC Address Binding
- **Advanced Functions:** Parental Control, Network Address Translation(NAT), Port Mapping(Grouping), Static Routing, RIP v1/v2(optional), DNS Relay, DDNS, IGMP V1/V2/V3
- **USB Sharing:** Support Samba(Storage)/FTP Server/Media Server/Printer Server, 3G/4G Modem
- **Management:** Web Based Configuration(HTTP), Remote management, command Line Interface, SSL for TR-069, SNMP v1/2c, Web Based Firmware Upgrade, Diagnostic Tools
- **Guest Network:** 2.4GHz guest network, 5GHz guest network
- **IPSec VPN:** Supports up to 10 IPSec VPN tunnels
- **Beamforming:** 5GHz
- **Protocols:** Supports IPv4 and IPv6

Others

Package Contents

- AC1600 Wireless Gigabit VDSL/ADSL Modem Router Archer VR600
- External Splitter
- RJ11 DSL Cable
- RJ45 Ethernet Cable
- Power Adapter
- Quick Installation Guide

Certi cation

- CE, FCC, RCM, RoHS

System Requirements

- Microsoft Windows 98SE, NT, 2000, XP, Vista™ or Windows 7, 8, 8.1, MAC OS, NetWare, UNIX or Linux
- Internet Explorer 11, Firefox 12.0, Chrome 20.0, Safari 4.0, or other Java-enabled browser
- Cable or DSL Modem
- Subscription with an Internet Service Provider (for Internet access)

Environment

- Operating Temperature: 0℃ ~40℃ (32 ℱ ~104 ℱ)
- Storage Temperature: -40℃ ~70℃ (-40 ℱ ~158 ℱ)
- Operating Humidity: 10%~90% non-condensing
- Storage Humidity: 5%~90% non-condensing

Others

Ideal to use with



- AC1750 Wireless Dual Band PCI Express Adapter Archer T8E



- AC1200 Wireless Dual Band USB Adapter Archer T4U

Similar Products



- AC750 Wireless Dual Band Gigabit VDSL2 Modem Router Archer VR200



- AC1900 Wireless Dual Band Gigabit VDSL/ADSL Modem Router Archer VR900



For more information, please visit
<http://www.tp-link.com/en/products/details/?categoryid=&model=Archer+VR600>
or scan the QR code left

Specifications are subject to change without notice. TP-LINK is a registered trademark of TP-LINK Technologies CO., Ltd. Other brands and product names are trademarks or registered trademarks of their respective holders. No part of the specifications may be reproduced in any form or by any means or used to make any derivative such as translation, transformation, or adaptation without permission from TP-LINK Technologies CO., Ltd. Maximum wireless speed of up to 1600Mbps is the theoretical data rate derived from IEEE standard 802.11 specifications. Actual data throughput and wireless coverage will vary due to network conditions and environmental factors including volume of network traffic, building materials and construction, network overhead. TP-LINK makes no express or implied representations or warranties about this product's compatibility with any future standards. 802.11ac 1300Mbps is approximately 3 times faster than 802.11n 450Mbps. 2.4GHz Performance Mode requires 256 QAM support on Wi-Fi client.

www.tp-link.com