



Highlights

Next-Gen Wi-Fi Technology

3× Faster Speed^Δ
Powerful and consistent signals to perfectly pair with Wi-Fi 6 routers supported 160 MHz bandwidth.[§]



 75% Lower Latency
More responsive gaming and seamless video conferencing.*

 Improved Security—WPA3™
The latest security enhancements provide enhanced protection in personal password safety.**

Bluetooth 5.0 Technology

Archer TX3000E is compatible with the latest Bluetooth 5.0 Technology, achieving 2× faster speed and 4× broader coverage than Bluetooth 4.2 to connect as more devices as you want and enjoy the smoother experience than ever.***



Highlights

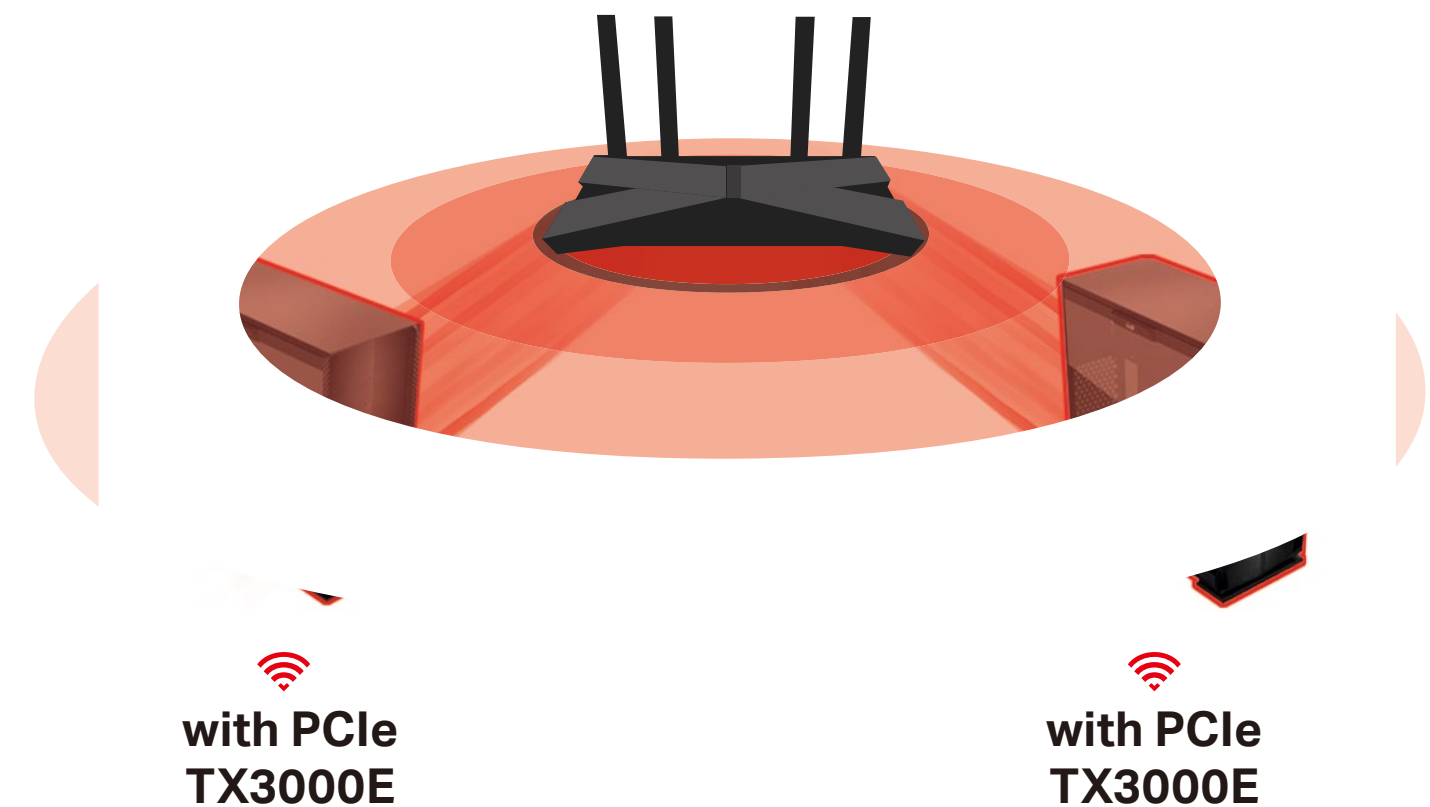
Broader Coverage Than Ever

Two multi-directional and high-performance antennas with a magnetized base



Superior Wi-Fi Reception

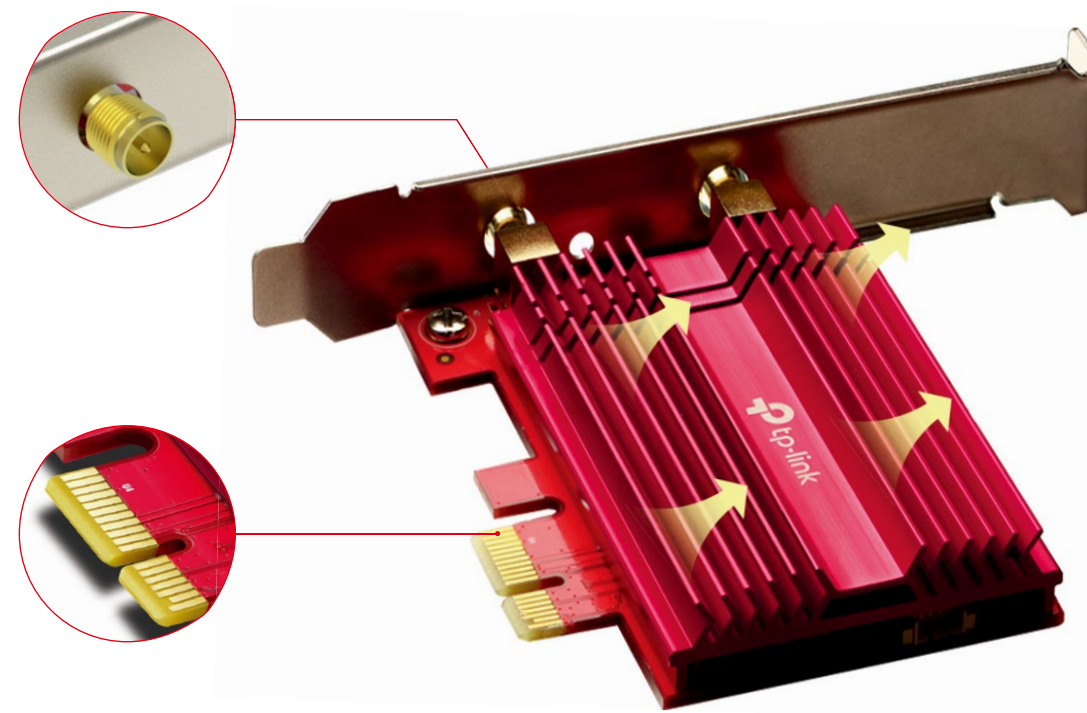
Equipped with 1024-QAM and MU-MIMO technology, Archer TX3000E delivers faster and clearer Wi-Fi to take your PC's Wi-Fi reception to the next level and fully achieve the potential of your Wi-Fi 6 router.[‡]



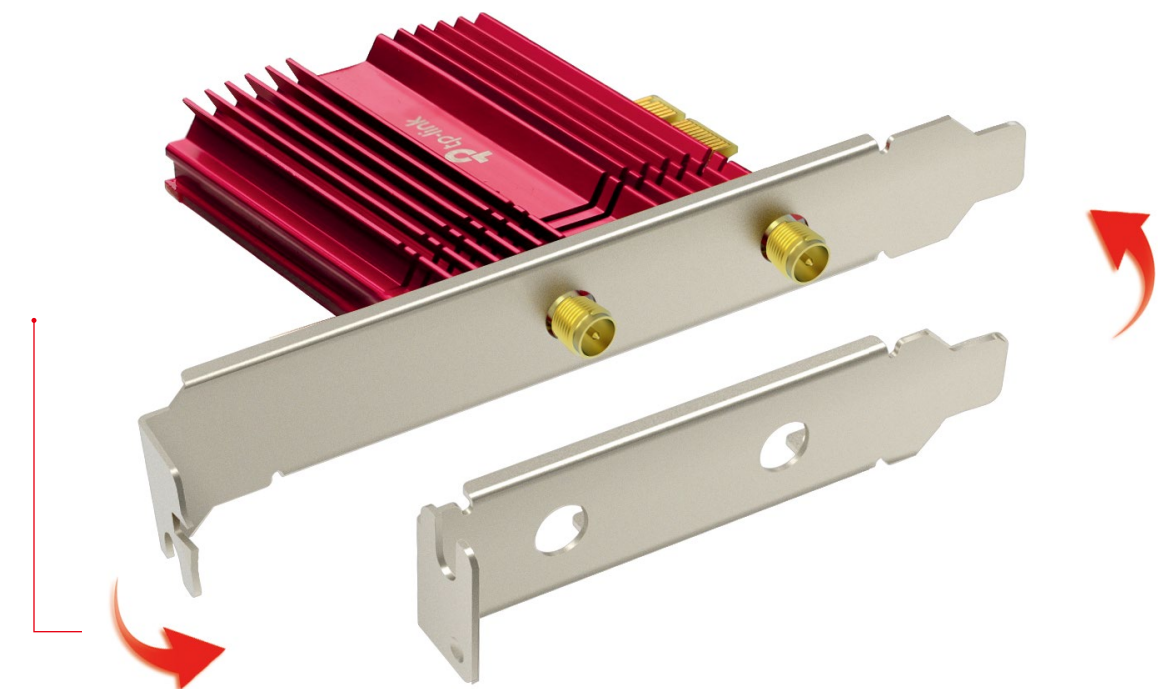
Highlights

Fine Crafting for Reliability

Built with a specialized heatsink crafted to improve stability and reliability even in hot environments. Careful attention to every detail, such as gold plating on every contactor to resist oxidation, delivers a superior network experience.



Low-Profile Bracket



Specifications

WLAN Features

- **Wireless Standards:** IEEE 802.11ax/ac/n/a 5 GHz, IEEE 802.11ax/n/g/b 2.4 GHz
- **Signal Rate:**
 - 5 GHz
 - 11ax: Up to 2402 Mbps(dynamic)
 - 11ac: Up to 1733 Mbps(dynamic)
 - 11n: Up to 300 Mbps(dynamic)
 - 11a: Up to 54 Mbps(dynamic)
 - 2.4 GHz
 - 11ax: Up to 574 Mbps(dynamic)
 - 11n: Up to 300 Mbps(dynamic)
 - 11g: Up to 54 Mbps(dynamic)
 - 11b: Up to 11 Mbps(dynamic)
- **Reception Sensitivity:**
 - 5 GHz :
 - 11ax HT160: -56.25dBm
 - 11ax HT80: -59dBm
 - 11ax HT40: -62.25dBm
 - 11ax HT20: -65dBm
 - 11ac HT160: -62dBm
 - 11ac HT80: -65.5dBm
 - 11ac HT40: -69.75dBm
 - 11ac HT20: -73.75dBm

- 11n HT40: -74.5dBm
- 11n HT20: -77.5dBm
- 11a 54Mbps: -77.75dBm
- 11a 6Mbps: -94.5dBm
- 2.4GHz :
 - 11ax HT40: -60.75dBm
 - 11ax HT20: -63.75dBm
 - 11n HT40: -73dBm
 - 11n HT20: -76.25dBm
 - 11g 54Mbps: -76.5dBm
 - 11b 11Mbps: -89dBm
- **Transmit Power:**
 - 5 GHz: 28dBm(FCC) / 23dBm(CE) (EIRP),
 - 2.4 GHz : 24dBm(FCC) / 20dBm(CE) (EIRP)
- **Wireless Modes:** Infrastructure mode
- **Interface:** PCI Express x1/x4/x8
- **Wireless Security:** Support 64/128 bit WEP, WPA/WAP2/WPA3, WPA-PSK/WPA2-PSK, 802.1x
- **Modulation Technology:** DBPSK, DQPSK, CCK, OFDM, 16-QAM, 64-QAM, 256-QAM, 1024QAM

Specifications

Bluetooth Features

- Standards and Protocols: Bluetooth 5.0, Bluetooth 4.2, Bluetooth 4.0
- Interface: USB 2.0
- Windows 10.

Hardware

- Chipset: Intel Wi-Fi 6 Chipset
- Antennas: Two High-Gain Dual Band Antennas, Magnetized Antenna Base
- Dimensions: 3.7 × 4.8 × 0.8 in (95.2 ×120.8 ×21.5 mm)

Others

- Package Contents
 - Archer TX3000E
 - Magnetized Antenna Base with 1m RF Cable
 - Two 5 dBi High Gain Antennas
 - Bluetooth Header Cable
 - Quick Installation Guide
 - Resource CD
- FCC, CE, RoHS
- System Requirements
 - Windows 10 (64-bit) only****
- Environment
 - Operating Temperature: 0°C~40°C (32°F ~104°F)
 - Storage Temperature: -40°C~70°C (-40°F ~158°F)
 - Operating Humidity: 10%~90% non-condensing
 - Storage Humidity: 5%~90% non-condensing



For more information, please visit
<https://www.tp-link.com/en/home-networking/pci-adapter/archer-tx3000e/v1/>
or scan the QR code left

Attention: This device may only be used indoors in all EU member states and EFTA countries.

†

†Use of Wi-Fi 6 (802.11ax), and features including OFDMA, MU-MIMO, and 1024-QAM require APs to also support the corresponding features.

§HT160 requires AP device that supports 160 MHz bandwidth on Wi-Fi.

wireless network routers.

**"Up to 75% lower latency" is based on Intel simulation data of 802.11ax with and without OFDMA using 9 clients. Average latency without OFDM is 36ms, with OFDMA average latency is reduced to 7.6ms. Latency improvement requires that the AP and all clients support OFDMA.

**Use of WPA3™ requires APs to also support the corresponding feature.

****Functionality of Archer TX3000E may be restricted on some computing systems and platforms. Please try to update the device's driver for feature compatibility.